

Our Impact

In 2015 ... 304 children in Cumberland and Salem Counties benefited from a one-to-one mentoring relationship.

Big Brothers Big Sisters is the leader in mentoring services to children.

An independent national study surveyed our programs and methods spanning a five-year period. They found that youth involved in Big Brothers Big Sisters mentoring programs were more likely to graduate and stay out of trouble when compared to their peers without mentors. They also found children and youth improved their school grades and relationships with others. Our program has proven results.

In the 70's we were known as Big Brothers of Vineland, serving boys referred by family court and mentored by lawyers, police officers, doctors, and prominent business professionals.

In 1982 we became Big Brothers Big Sisters of Cumberland County, serving boys and girls, ages 7 through 18, throughout Cumberland County that were primarily referred by a relative or teacher.

In 1995, Big Brothers Big Sisters started High School and School-Based Programs. We now have programs in 23 schools throughout Cumberland and Salem Counties. These programs allow adults and high school students to visit the elementary and middle school students on a weekly basis.

Since 2002, there have been 3,599 boys and girls matched in a one-to-one mentoring relationship through our program.

In 2005 our service area expanded to include Salem County.

78% of our Littles receive free/reduced school lunches.

In 2015, there were 304 children with a Big Brother or Big Sister while 83 children continued to wait for a Big. Waiting Littles participated in agency activities.

Our Vision ...

That all children achieve success in life.

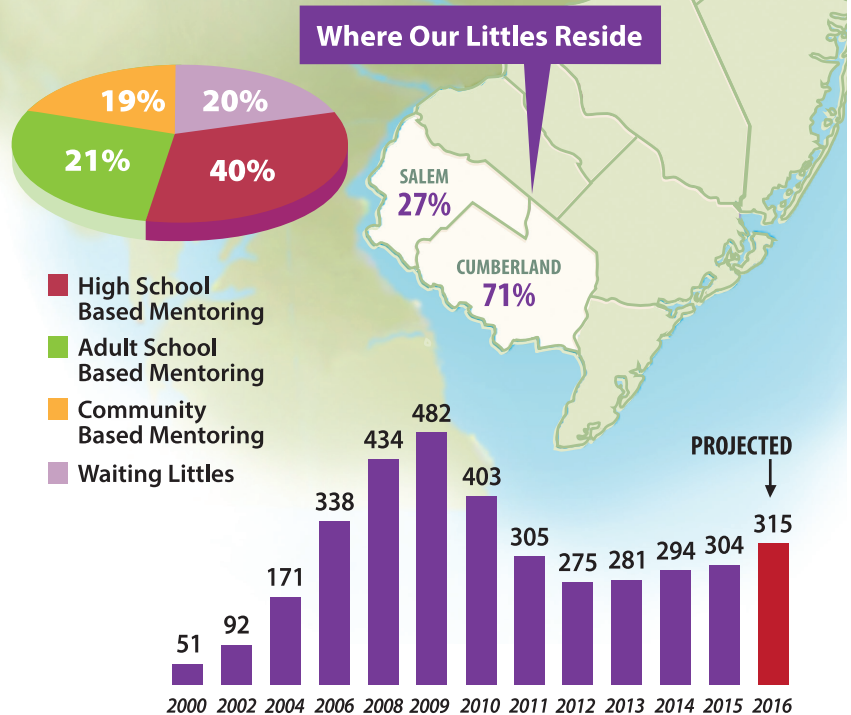
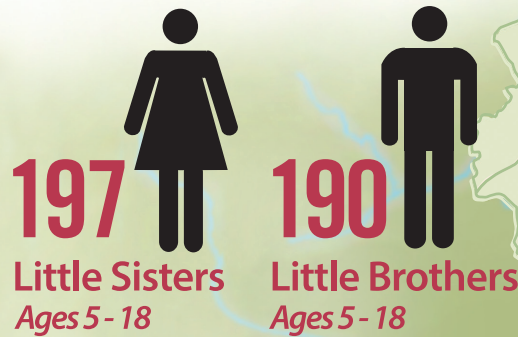
Our Mission ...

To provide children facing adversity with strong and enduring, professionally supported one-to-one relationships that change their lives for the better, forever.



P.O. Box 2188, 1944 E. Landis Avenue, Vineland, NJ 08362
856.692.0916 • Fax: 856.692.0766 • agency@southjerseybigs.org

www.southjerseybigs.org



The Match Process

It costs \$1200 per year to develop and maintain each one-to-one mentoring relationship. The safety and well-being of each child are top priorities when recruiting and maintaining a one-to-one relationship with their Big Brother or Big Sister.

Enrollment Process for Bigs:

- Application and assessment by staff includes an in-home interview
- Professional assessment includes a criminal background check, fingerprinting, proof of auto insurance, driver's abstract, and three non-relative references

Staff are trained in social services and child safety. They maintain close ties with each match—communicating a minimum of once a month with Bigs, Littles, and Guardians/Schools.

Liability insurance coverage protects all individuals.