



# OUR IMPACT



**In 2021 ... 145 children in Cumberland and Salem Counties benefited from a one-to-one mentoring relationship. While 40 youth continued to wait for a mentor.**

**Big Brothers Big Sisters is the leader in mentoring services to children.** An independent national study surveyed our programs and methods spanning a five-year period. They found that youth involved in Big Brothers Big Sisters mentoring programs were more likely to improve their grades, graduate from high school, and stay out of trouble.

**In the 70's we were known as Big Brothers of Vineland,** serving boys referred by family court and mentored by lawyers, police officers, doctors, and prominent business professionals.

**In 1982 we became Big Brothers Big Sisters of Cumberland County,** serving boys and girls, ages 7 through 18, throughout Cumberland County that were primarily referred by a relative or teacher.

**In 1995, Big Brothers Big Sisters started High School and School-Based Programs.** These programs allow adults and high school students to visit the elementary and middle school students on a weekly basis.

**Since 2002, there have been more than 4,000 boys and girls matched** in a one-to-one mentoring relationship through our program.

**In 2005 our service area expanded to include Salem County.**

**69% of our Littles** receive free/reduced school lunches.

## OUR VISION

All youth achieve their full potential.

## OUR MISSION

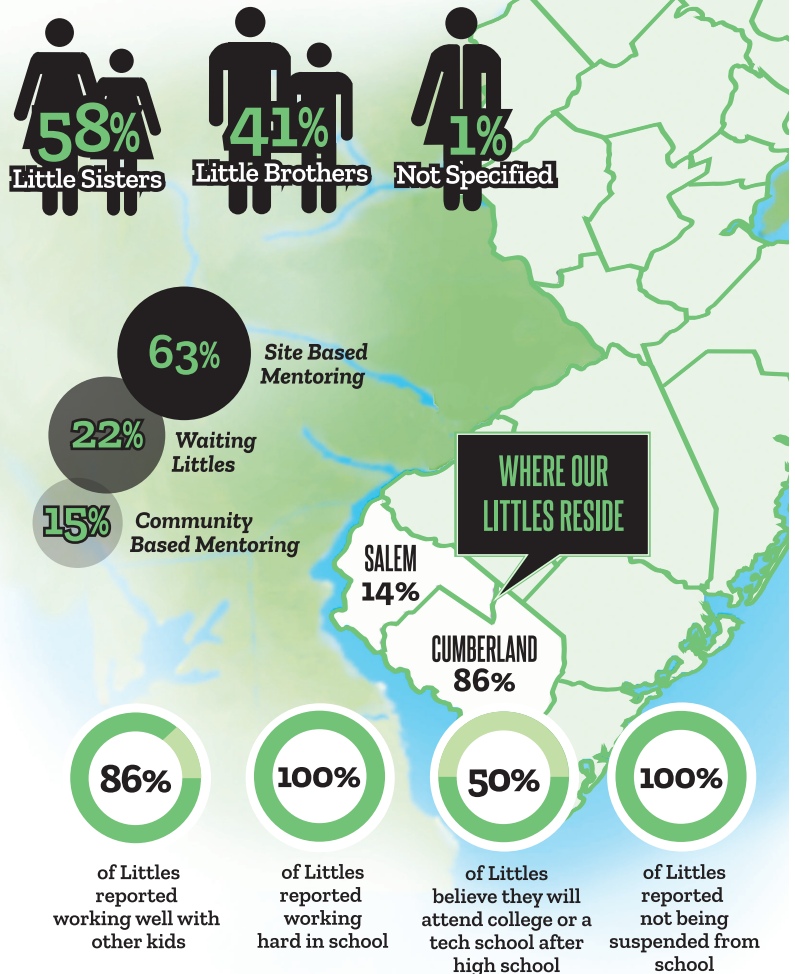
Create and support one-to-one mentoring relationships that ignite the power and promise of youth.

**IGNITE. DEFEND. EMPOWER.**

 **Big Brothers Big Sisters.**  
OF CUMBERLAND & SALEM COUNTIES

P.O. Box 2188, 1944 E. Landis Ave.,  
Vineland, NJ 08362  
856.692.0916 • Fax: 856.692.0766  
agency@southjerseybigs.org

[www.SouthJerseyBigs.org](http://www.SouthJerseyBigs.org)



Survey results from randomly selected Matched Littles in our Adult School Based and Community Based Programs

## THE MATCH PROCESS

The safety and well-being of each child are top priorities when recruiting and maintaining a one-to-one relationship with their Big Brother or Big Sister.

### Enrollment Process for Bigs:

1. Application and assessment by staff (an in-home interview is held for community-based and school-based plus mentors)
2. Professional assessment to include criminal background check, fingerprinting, proof of auto insurance, driver's abstract, and a minimum of three references

### Staff are trained in social services and child safety.

They maintain close ties with each match—communicating a minimum of once a month with Bigs, Littles, and Guardians/Schools.

**Liability insurance coverage protects all individuals.**